

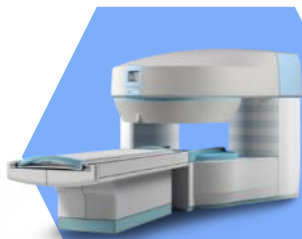
Bstar-150 introduction

BASDA 贝斯达

Founded in the year 2000 in Shenzhen, BASDA is a State High-tech company focused on the research, development, production and service of medical imaging and radiotherapy devices.



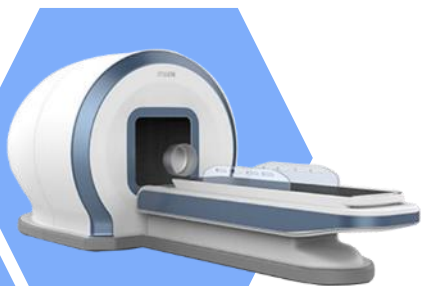
Open MRI



Superconductive
MRI



Radiotherapy



DR



ECT



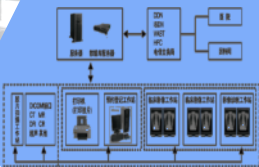
CT

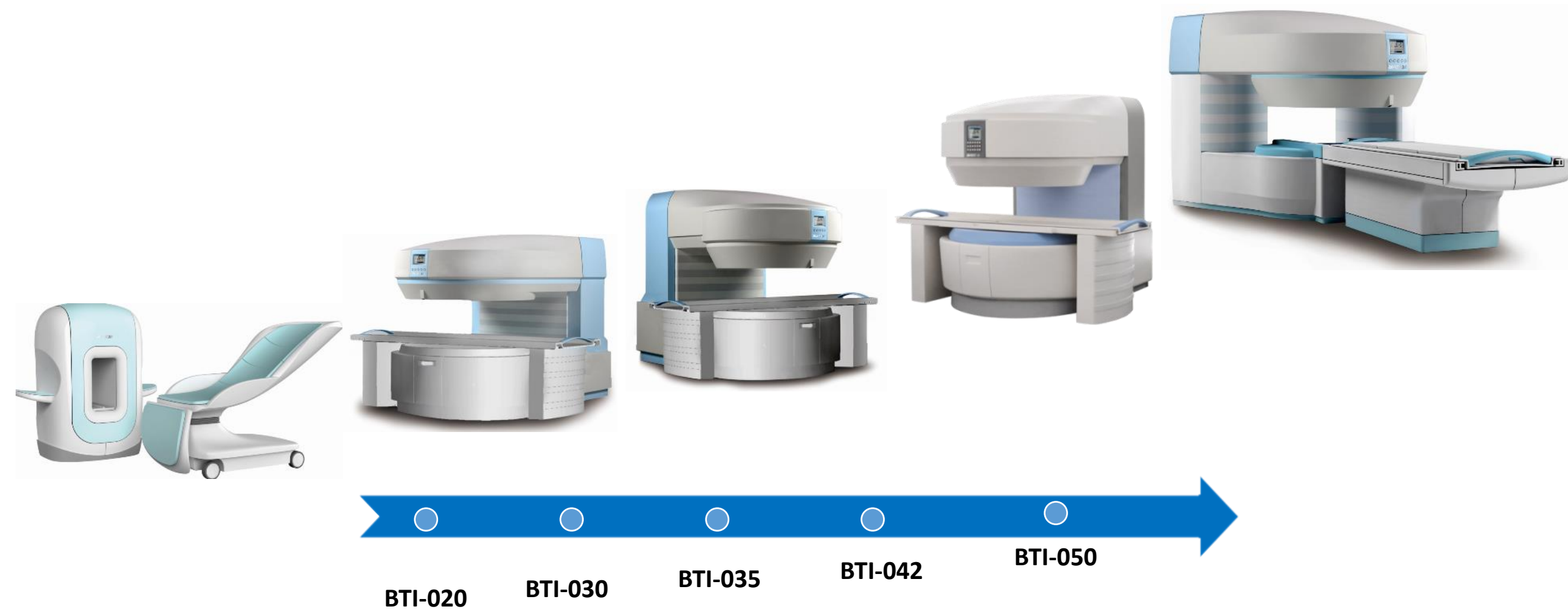


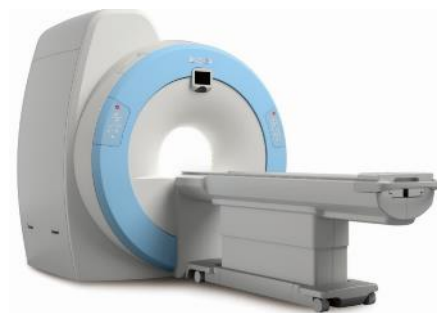
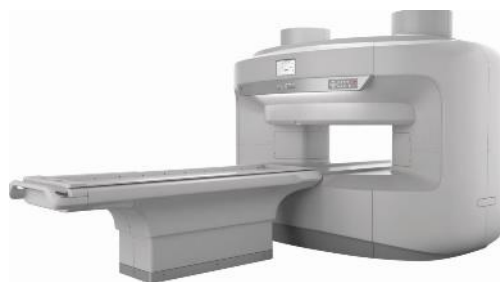
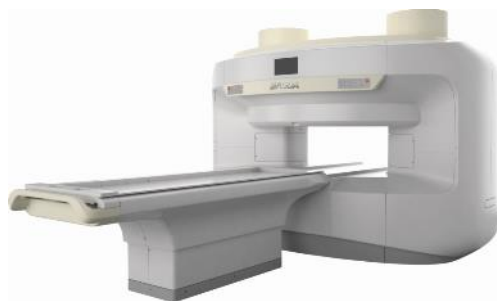
USG



RIS







Bstar-050

Bstar-070

Bstar-120

Bstar-150

Bstar-300



- CE, ISO9001, ISO13485, CB certification.
- Ensures the system quality.



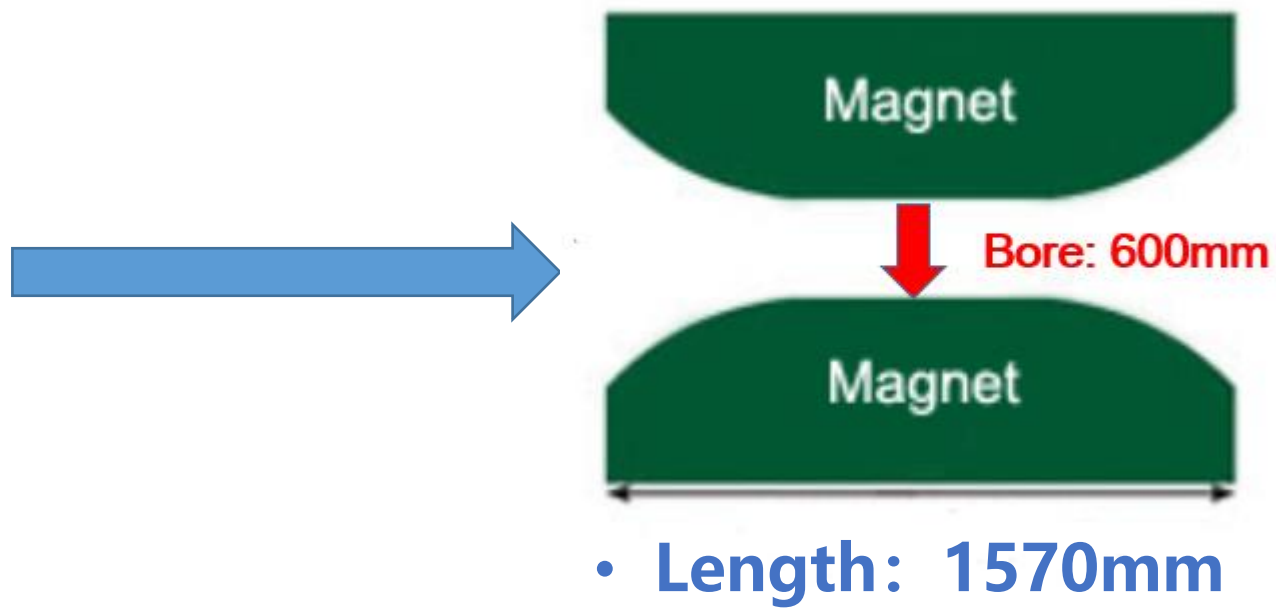
- **BASDA is one of the first manufacture developed superconductive MRI in China.**





- Helium supplement interval time :
 ≥ 48 months
- Zero consumption technology



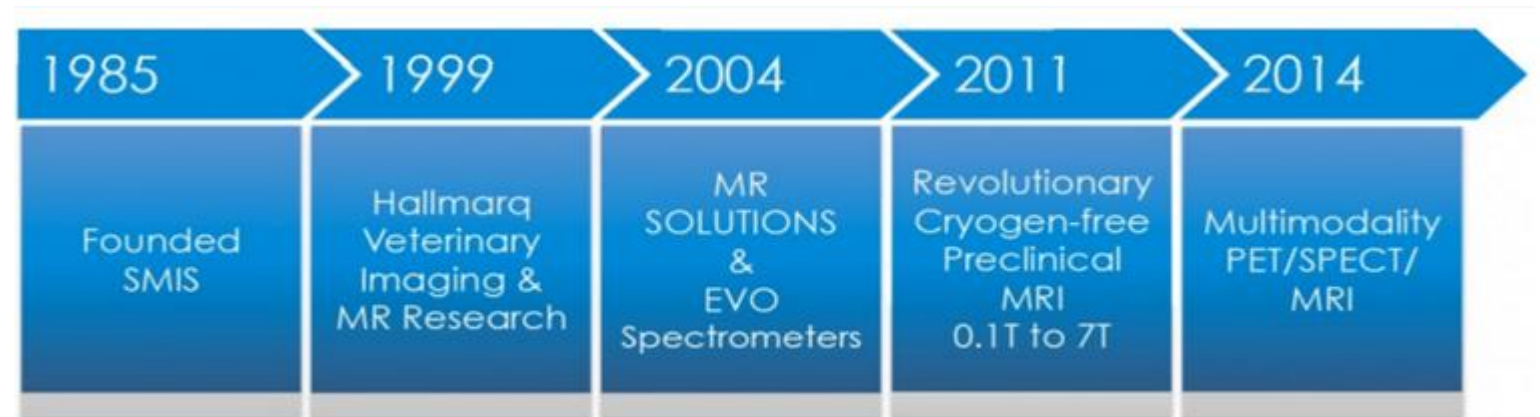


E-alarm technology is a special technology that help to protect the magnet, with following features:

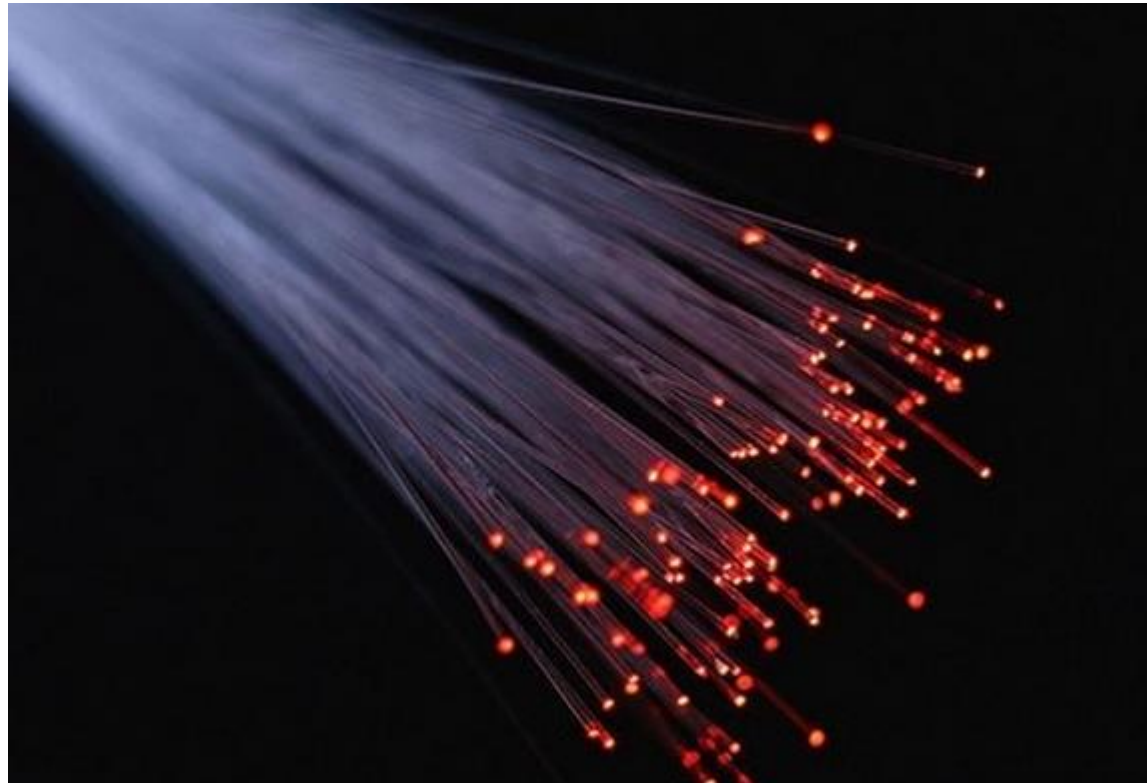
- Built-in magnet monitoring system, real-time monitoring inner pressure, temperature and liquid level of magnet.
- Build-in SIM card, auto-sending MSG to the operator in case magnet condition is abnormal.
- Greatly reduce the quench risk.



- **Full Digital** 8-16 channels spectrometer.
- MRS made in England.



- Signal transfer on fiber, reduce the RF signal lost.



- **18KW RF Amplifier** assure strong proton excitation power and homogeneity of B1 field.
- Made in Japan.



TOSHIBA

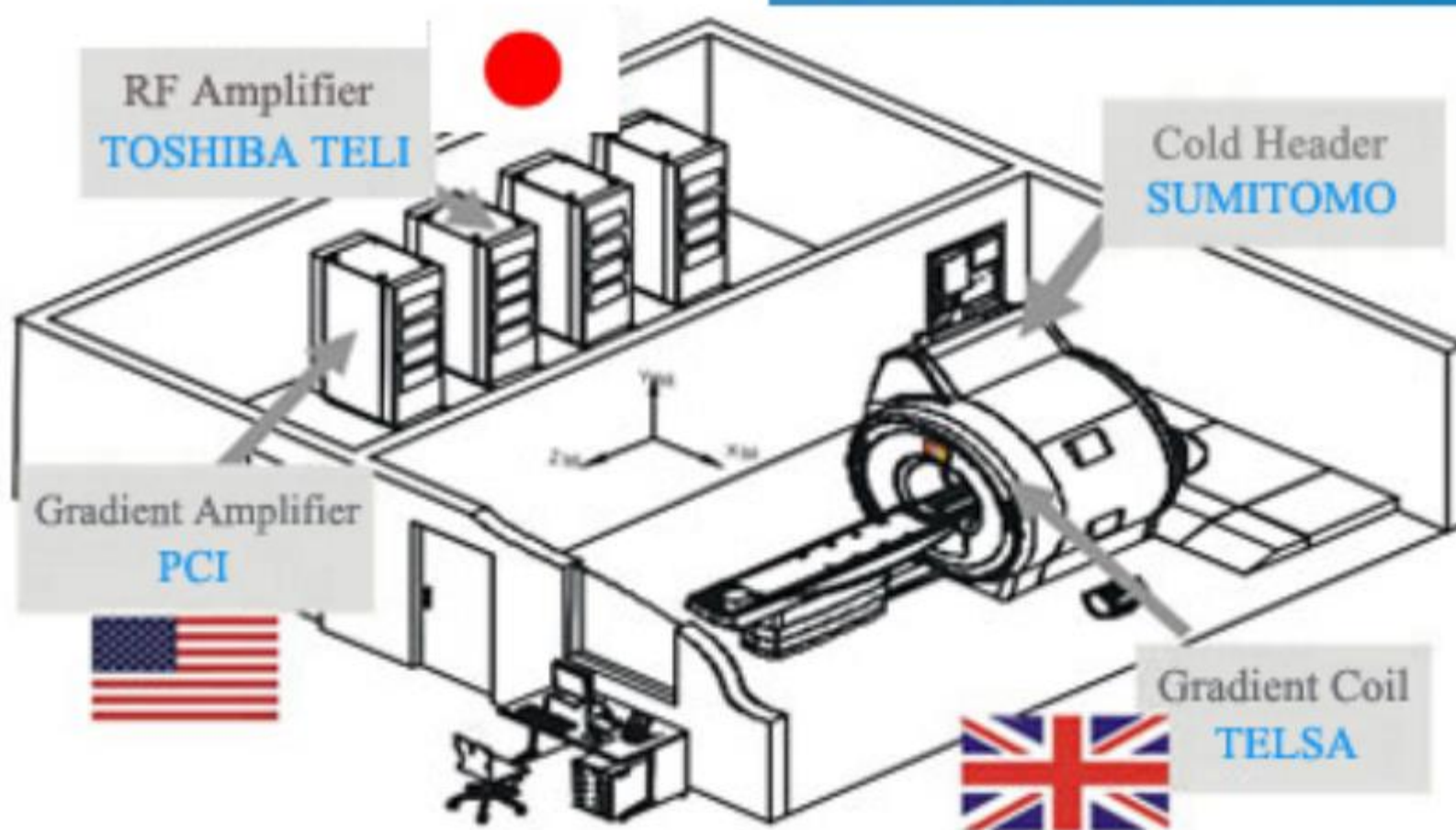


- Gradient intensity: 41mT/m
- Slew rate: 187mT/m/ms
- Water cooling



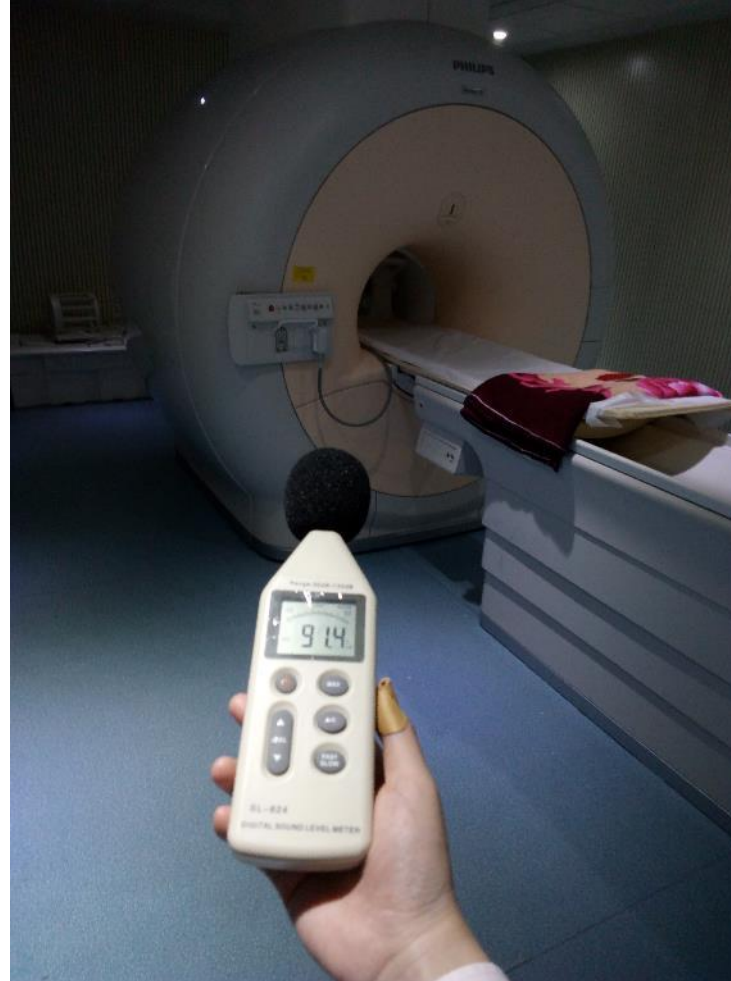
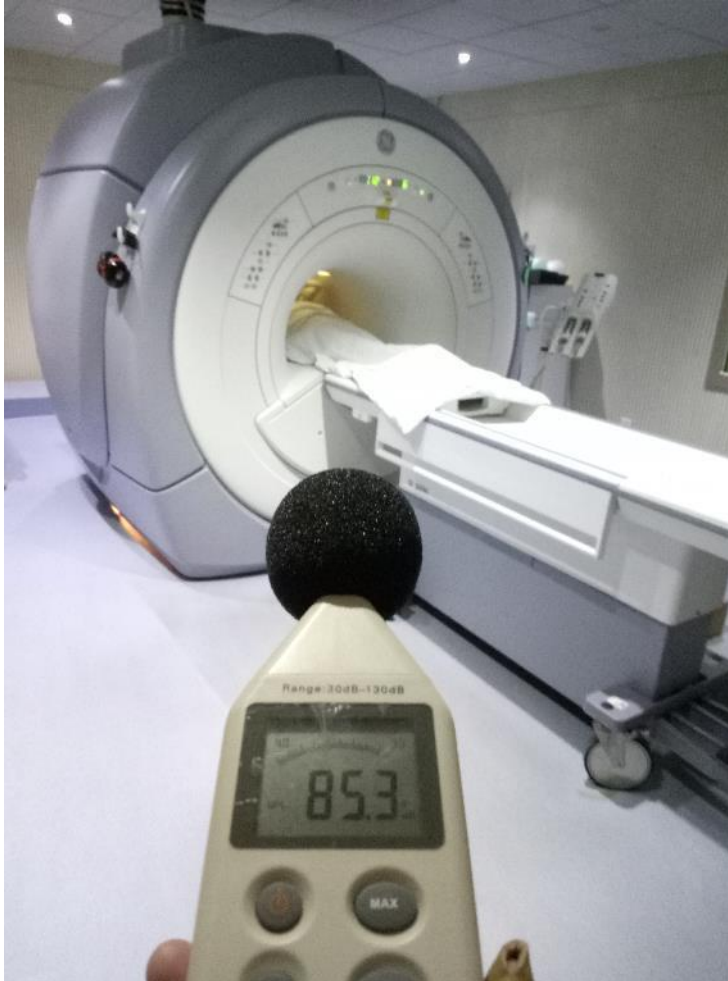
GRADIENT
POWER
AMPLIFIERS

- The top original core components



- With **Quiet Comfort noise reduce technology**, the gradient noise is 33% reduced, provide very comfortable scanning environment.
- Self-shielding gradient system, can avoid the eddy current between metal shielding layers.
- Automatic temperature detection, protect the hardware from high temperature damage.

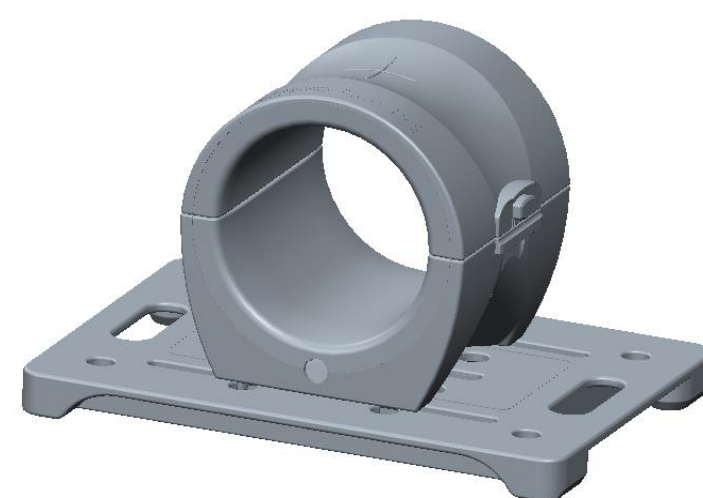
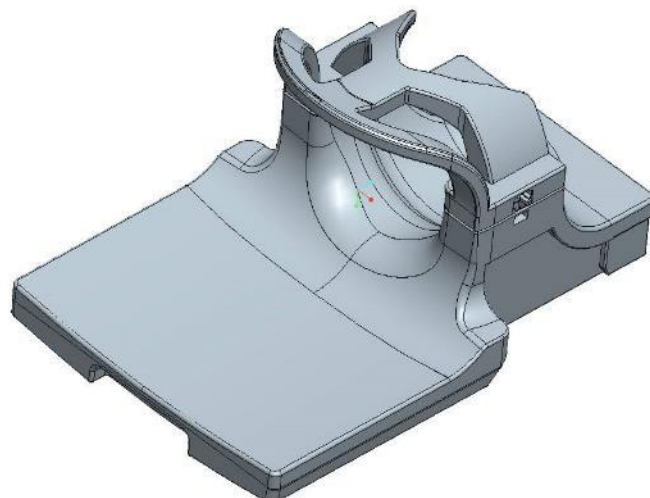
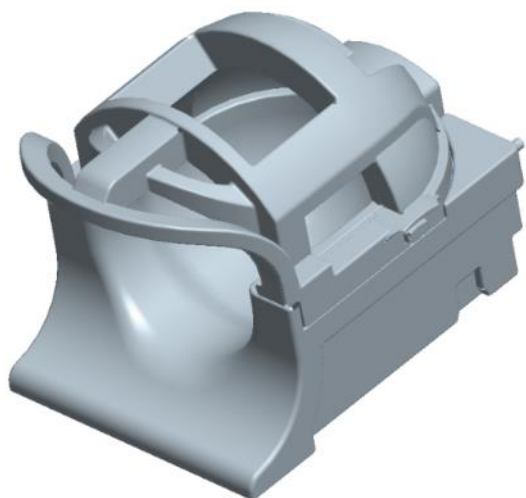


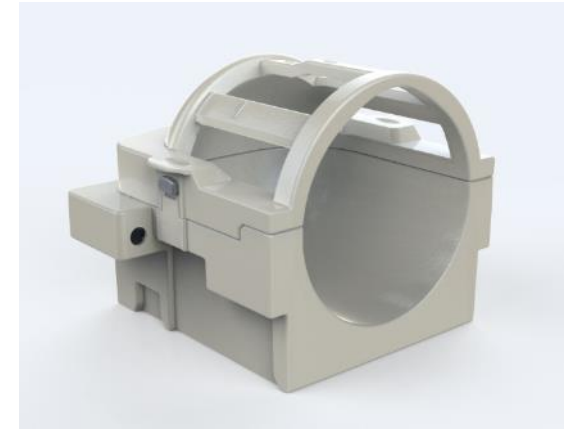
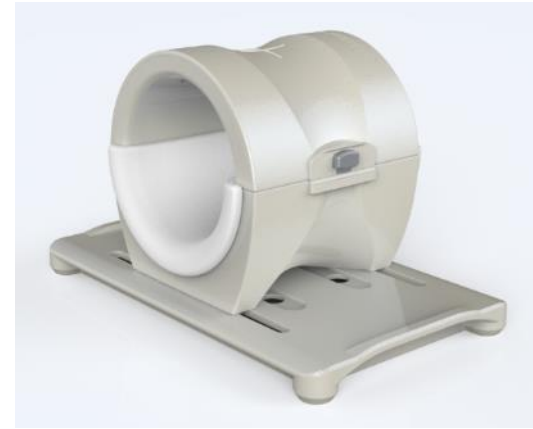
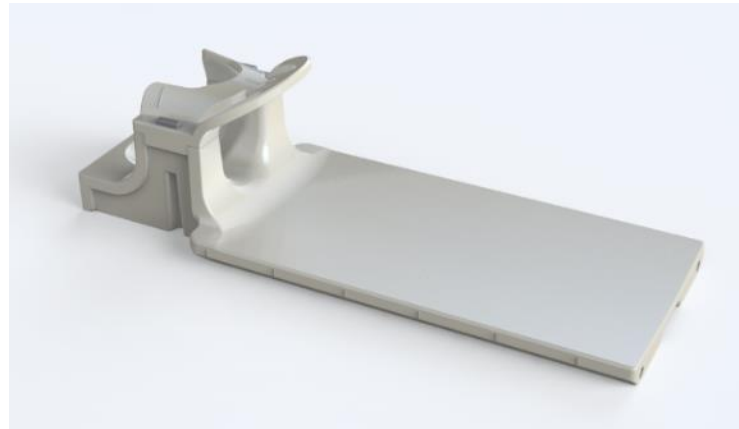
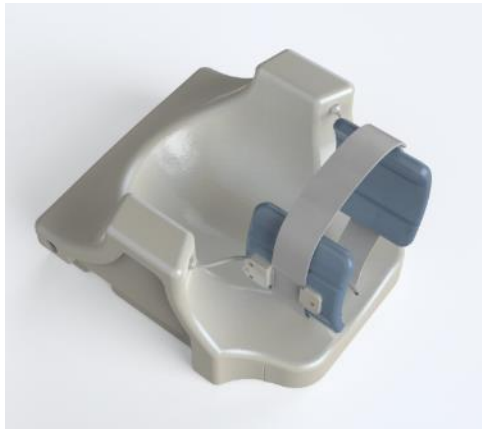
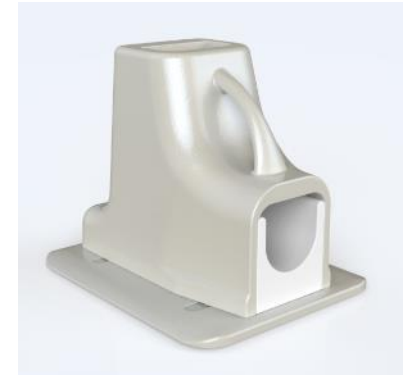
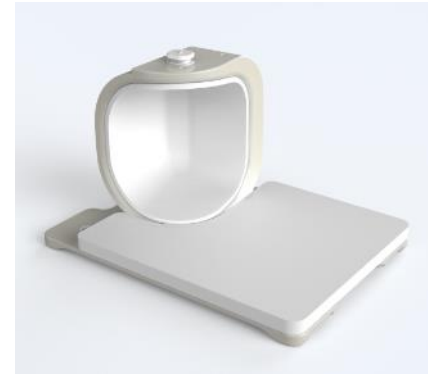
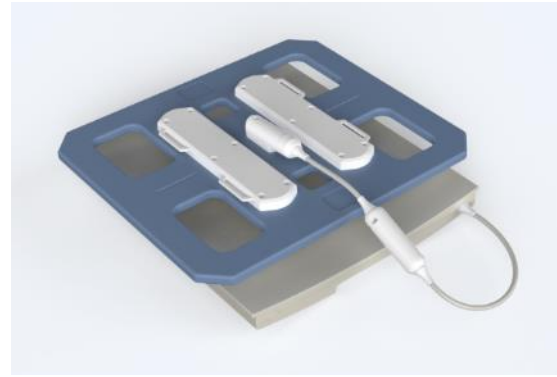




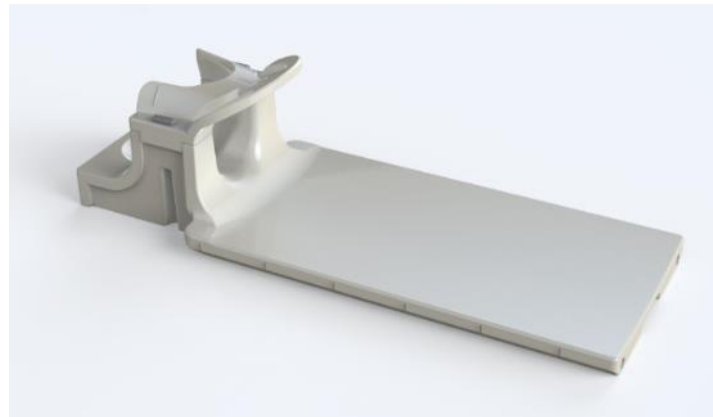
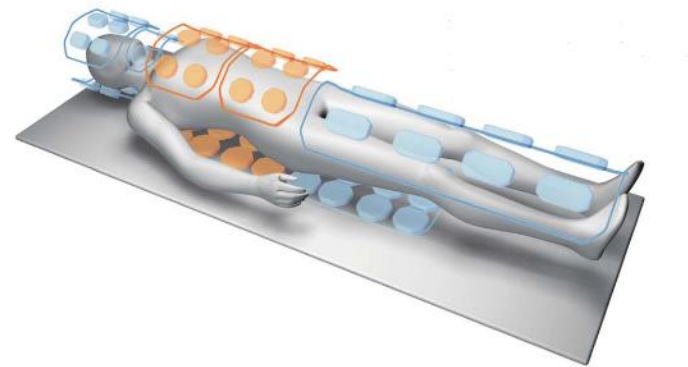
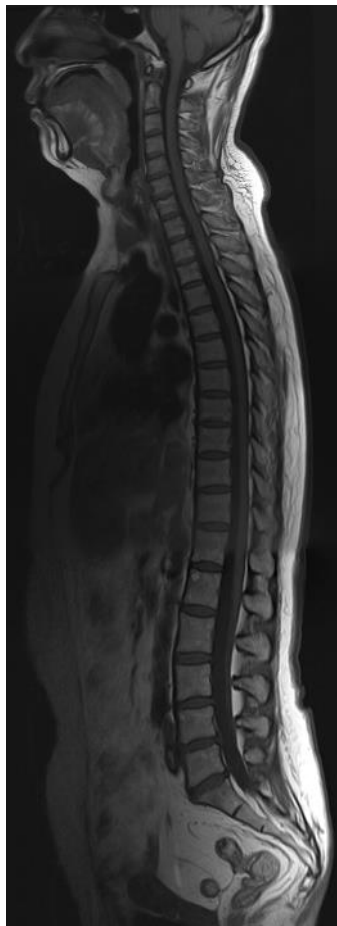
Receiver coils

1	Head coil (CH8)	5	Breast coil(CH8 & CH4)	9	Spine coil(CH18 HIGH)
2	Neck coil(CH8)	6	Shoulder coil(CH4)	10	Soft coil(CH4)
3	Body coil(CH8)	7	Ankle coil(CH8)	11	Head-neck coil(CH16)
4	Knee coil(CH8)	8	Full palm coil(CH8)	12	AIT coil(CH18)





- One time position, full field imaging.
- Greatly improve the efficiency.



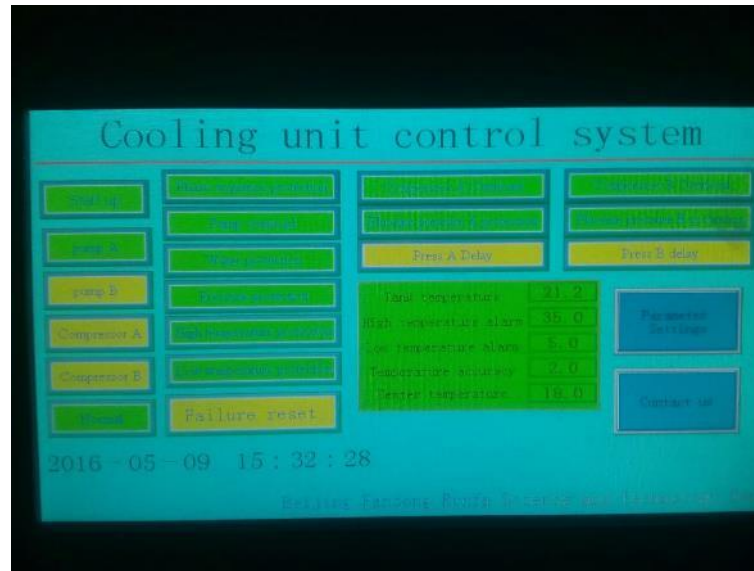
- Fool-proof coil interface, prevent the damage from wrong operation.



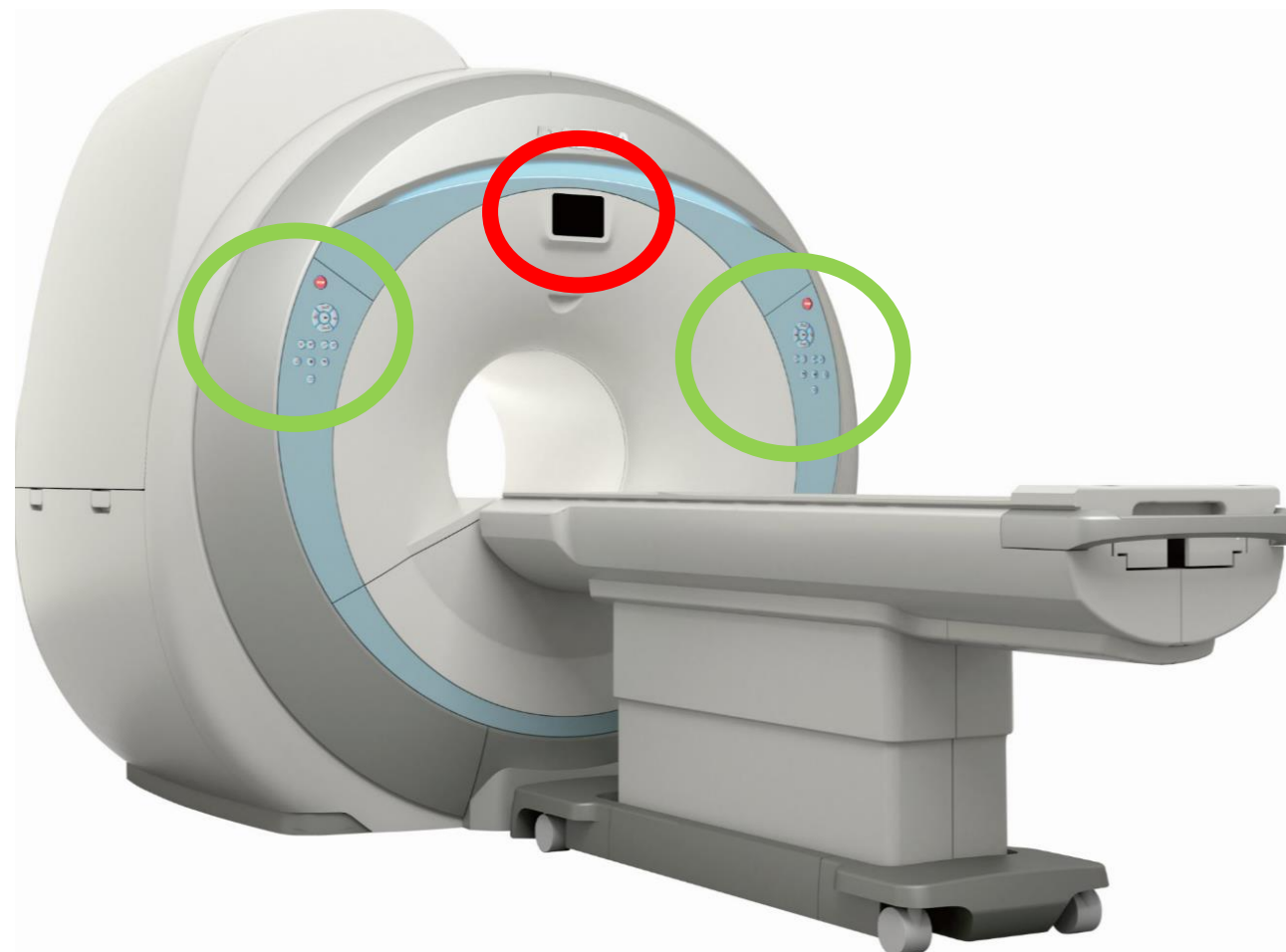
Chiller system

BASDA 贝斯达

- Intelligent touch-screen water chiller control.
- Auto fault / leaking / overheating detection.
- One-key reset function.
- **Include one built-in backup water pump**, preventing from system halt down.



- Motor-driven patient table Max. load 200Kg
- 8" TFT screen @ 800*600, easy to operate
- With emergence stop key
- **Positioning accurate $\leq 1\text{mm}$**
- Can operate at both side of the magnet



High performance workstation with BASDA MRI software

- OS: Windows 7
- CPU: Quad core \geq 2.8GHz
- RAM: \geq 2GB (be able for extension)
- HDD: \geq 500GB (be able for extension)
- Monitor: 24" LCD TFT
- All system condition monitor data integrated in workstation.

